



Rapid COVID-19 Antigen Self-Test PROCEDURE CARD

IMPORTANT

- This test can be used within the first ten days that symptoms appear for COVID-19.
- This test is approved for use at home by individuals aged 12 years or older. Nasal swab samples from individuals aged below 12 years should be collected by or under supervision of adults. It is suggested that individual above 70 years of age should be tested with assistance if needed.
- The test will take approximately 5 minutes to setup and the test results must be read at 15 minutes.
- It is important that you carefully follow the instructions to achieve the correct result.
- The test device and the buffer solution must be at room temperature (15-30°C) before starting the test.
- Please wash or sanitize your hands before and after the test.
- Please take required safety measures when testing other people (e.g. face mask, gloves).

If you have questions about using the test or reading the results, please call customer care.
Telephone: +1 713-733-8088
Internet: www.healgen.com

GETTING STARTED (GCCOV-502a-H1/H2/H3/H5)

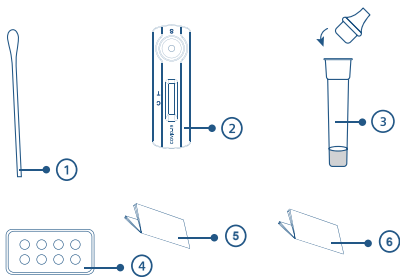
| Kit Contents | |
|--------------|---------------------------------------|
| 7/10/15/20 | Test devices |
| 7/10/15/20 | Sterile swabs |
| 7/10/15/20 | Extraction tubes with buffer and tips |
| 1-2 | Workstation(s) |
| 1 | Instructions for use |
| 1 | Procedure card |

OPTIONAL MATERIALS

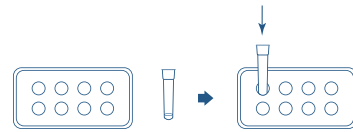
Waste bag

ITEMS REQUIRED BUT NOT PROVIDED

Clock, timer or stopwatch



TEST PROCEDURE



Step 1. Insert the tube into the workstation (the package). Remove the lid from the top of the tube.



Step 4. Roll the swab at least 5 times against the insides of your nostril. Ensure good contact between the swab and the insides of your nostril.

Step 5. Remove the swab and insert into your right nostril. Repeat Steps 3 and 4.



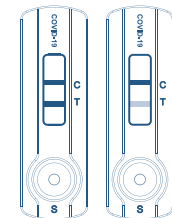
Step 10. Remove the swab and discard in a plastic bag.



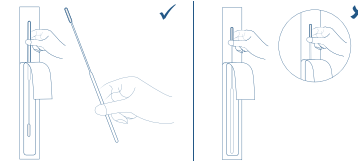
Step 11. Push the tip provided in the kit into the tube and ensure it fits tightly.

Step 15. Read your results. There are three possible types of results.

Positive Test Result



If the test device looks like either of the positive result windows as shown on the left, you have a current Covid-19 infection. Please call your doctor or your local health department and make sure you adhere to local guidelines for self-isolation. Re-testing with other test methods such as a PCR test may be required.



Step 2. Open the swab package where indicated. Pull the swab out by grasping the plastic end. Do not touch the absorbent swab tip.

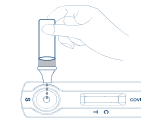


Step 6. Remove the swab from your nostril and insert the swab into the prepared tube in the workstation.



Step 7. Mix well by rolling the swab at least 6 times while pressing the head of the swab against the bottom and sides of the tube.

Squeeze here 4 drops of solution



Step 13. Add 4 drops of the solution into the sample well of the test device by gently squeezing the tube.



Step 12. Remove the test device from the kit into the pouch and lay it on a flat clean surface.



Step 3. Carefully insert the absorbent tip of the swab into your left nostril. Ensure that the entire swab tip is inside your nostril (2-4 cm deep). Do not insert the swab further after you feel resistance.



Step 8. Start timer. Leave the swab in the tube for 1 minute.



Step 9. Squeeze the tube several times from the outside. Try to dissolve as much solution from the swab as possible.



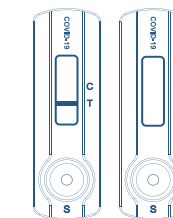
Step 14. Start timer and read results at 15 minutes. It is important to read the results at 15 minutes.

Negative Test Result



If the test device looks like the negative result window as shown on the left, no Covid-19 infection could be detected. In a suspected case, repeat the test after 1-2 days since the virus cannot be accurately detected in all phases of an infection. Despite a negative test result, you still have to comply with all applicable rules regarding contact with others and protective measures.

Invalid Test Result



If your test result looks different, meaning there is no line visible or only one line at T, the result is invalid. This may be a result of the test execution, and the test should be repeated. If invalid test results continue, please contact your doctor or a COVID test center.

INDEX OF SYMBOLS

| | | | | | |
|--|---|--|---------------|--|---------------------------|
| | Consult instructions for use | | Tests per kit | | Authorized Representative |
| | For <i>in vitro</i> diagnostic use only | | Use by | | Do not reuse |
| | Store between 2-30°C | | Lot Number | | Catalog# |
| | | | | | Manufacturer |

Healgen Scientific Limited Liability Company
Address: 3818 Fuqua Street, Houston, TX 77047, USA.
Tel: +1 713-733-8088 Fax: +1 713-733-8848
Website: www.healgen.com

Shanghai International Holding Corp. GmbH (Europe)
Add: Eiffestrasse 80, 20537 Hamburg, Germany



GCCOV-502a-H7
GCCOV-502a-H10
GCCOV-502a-H15
GCCOV-502a-H20

Revision date: 2021-11-05
B22193-02